



ORACLE®

**Business process architect
SOA Governence**

Richard Chovanec, Solution Architect, ICCC
Rovinj, October 2007, Croatia

Safe Harbor Statement

The following is intended to outline our general product direction. It is intended for information purposes only, and may not be incorporated into any contract. It is not a commitment to deliver any material, code, or functionality, and should not be relied upon in making purchasing decisions.

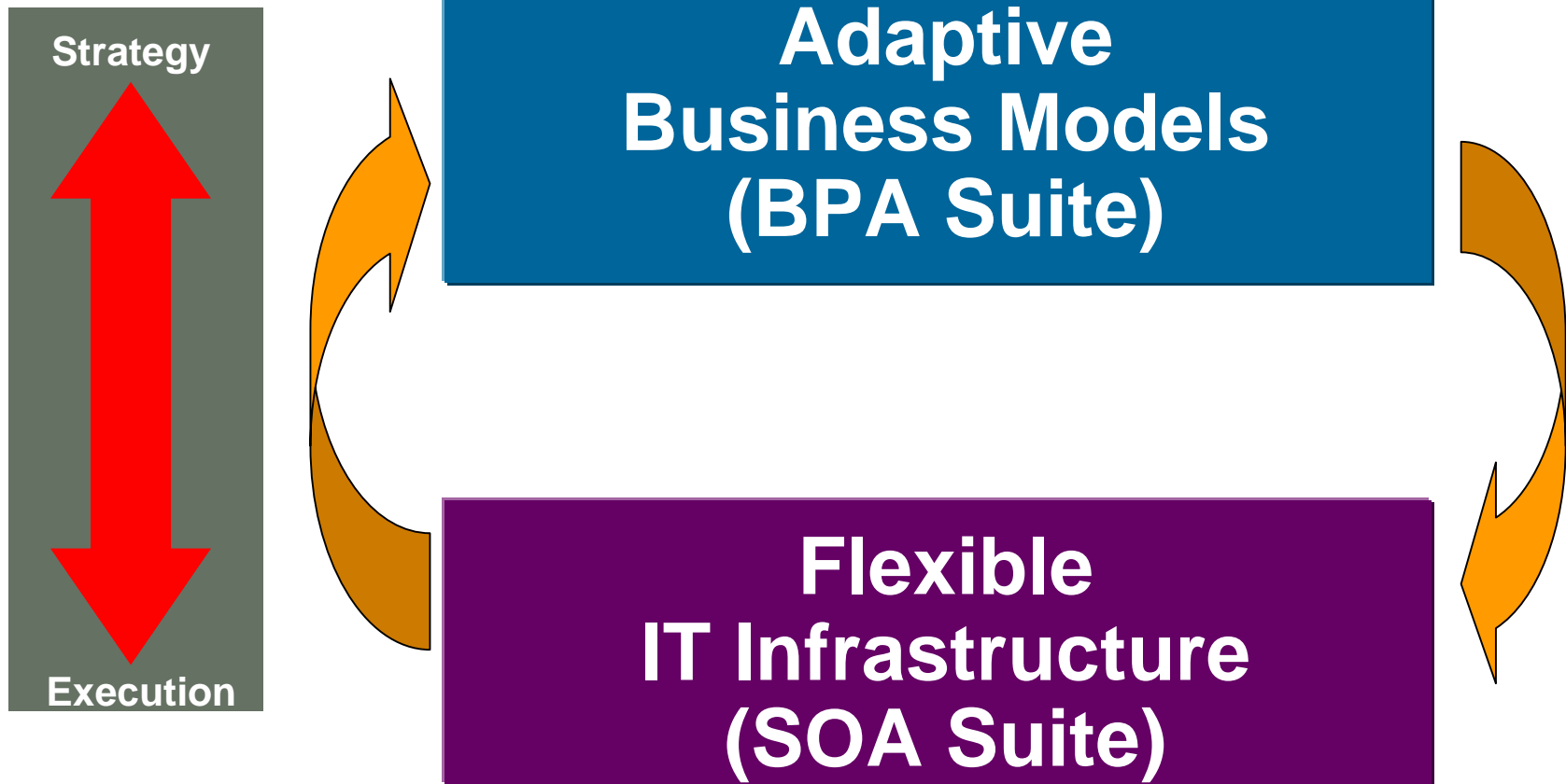
The development, release, and timing of any features or functionality described for Oracle's products remains at the sole discretion of Oracle.

Content

- Need for Business process management
- Business process architect – overview
- Business process architect & SOA Integration
- SOA Governance
- Q&A



Need for Business process management

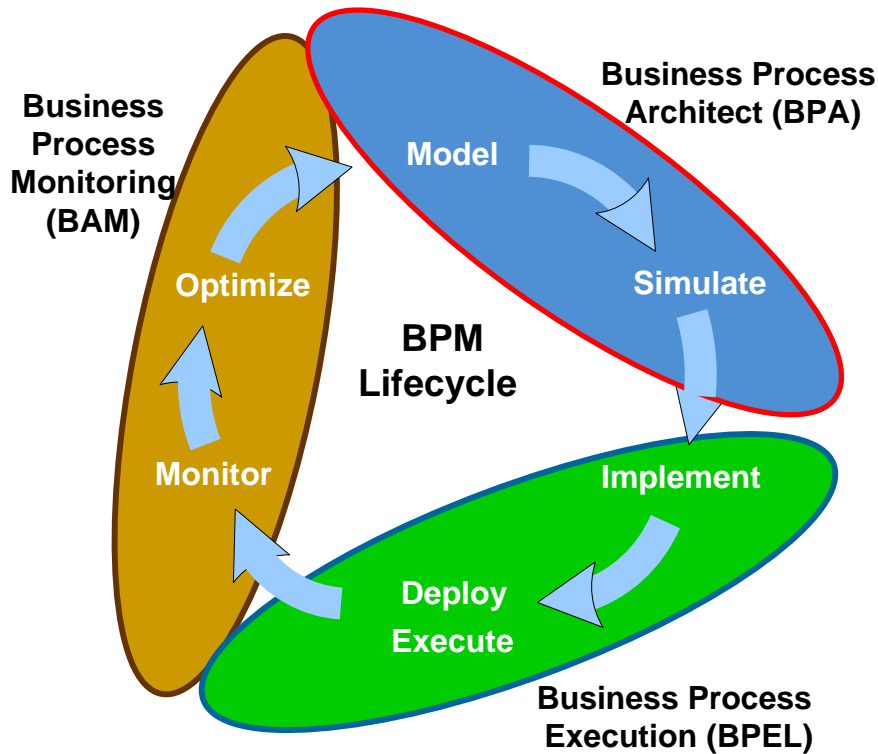


SOA Drives the Need for BPM

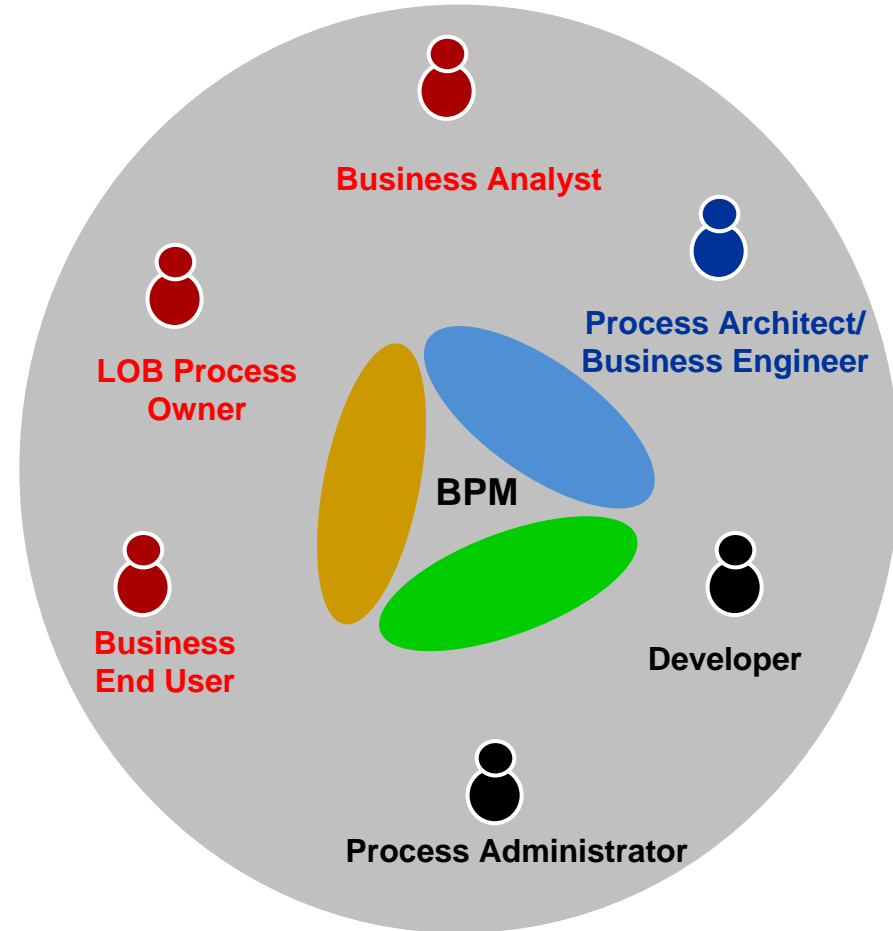
- Opportunity to move SOA from a technical to a business discussion
- Opportunity to get the Business and IT to use same set of tools to enhance collaboration
- Opportunity to manage the change lifecycle effectively

Typical BPM Lifecycle

Various Phases



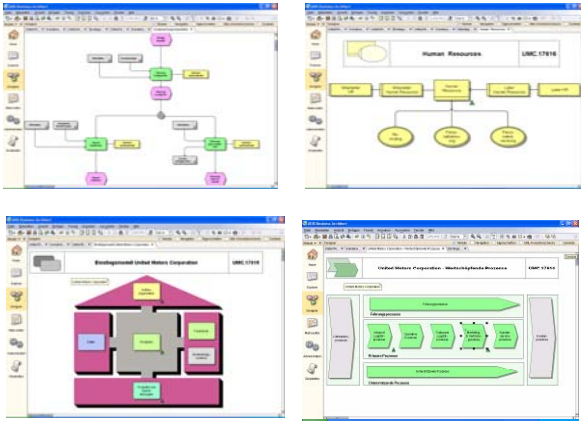
Various Stakeholders



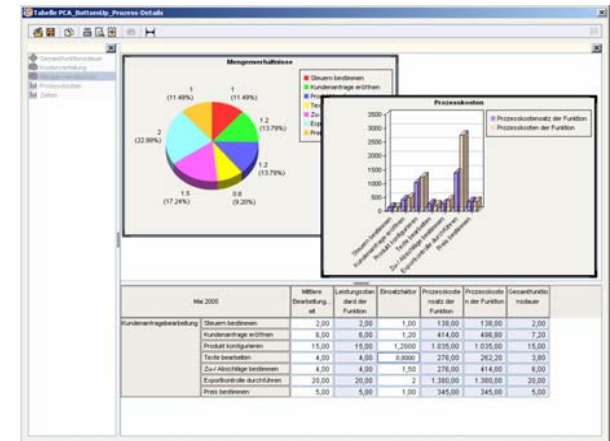
Oracle BPA Suite – Powered by ARIS



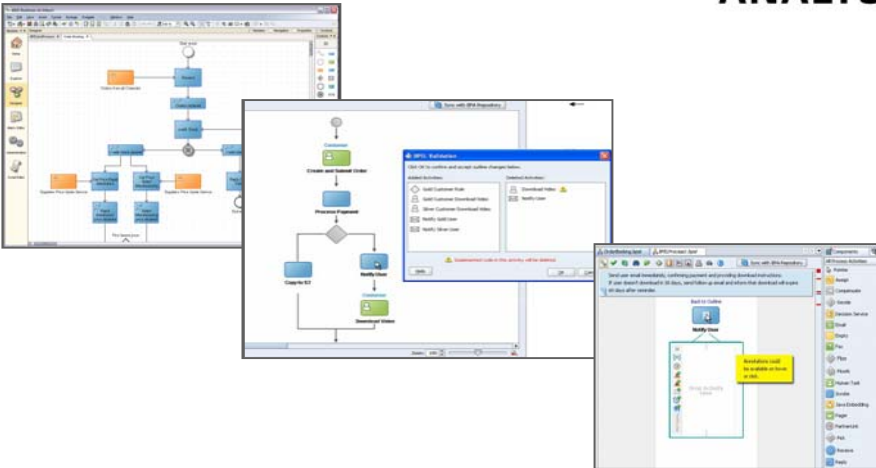
Business Process Architect



Business Process Simulator

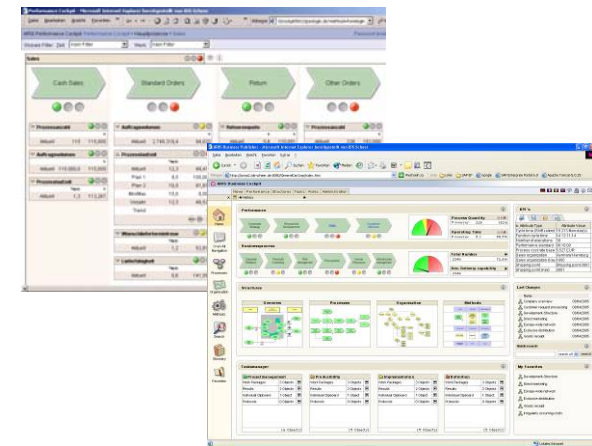


Oracle SOA Extensions



BUSINESS PROCESS ANALYSIS SUITE

Business Process Publisher



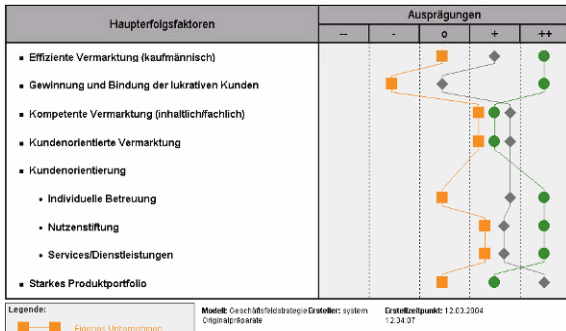
Analyze Corporate Knowledge With a Simple Mouse Click...

... using pre-defined reports and analyses.

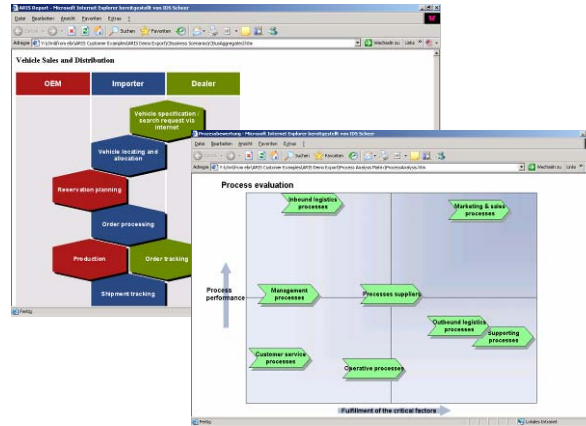


Analyses

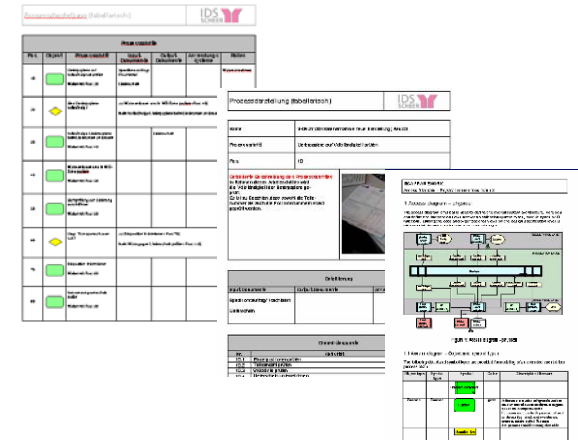
Haupterfolgsfaktoren-Analyse



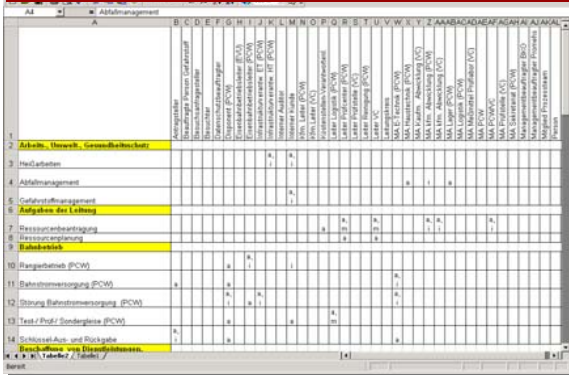
Reports



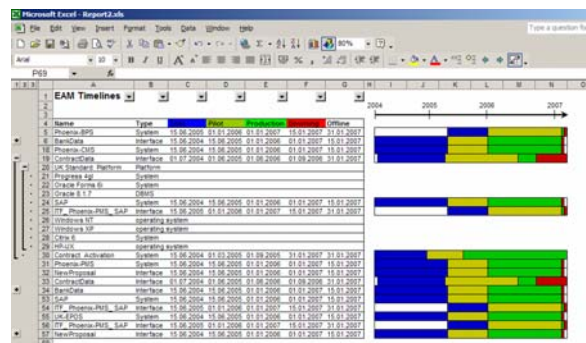
Process Representations



Business Analyses



IT Analyses



Statistics



Extension of standard ARIS model

- Base Model Type – EPC Row Display
- Five New Objects & Symbols (BPMN like) in both EPC and BPMN model types
 - Automated Activity
 - Human Task
 - Business Rule
 - Notification Activity
 - KPIs/Monitoring Probes
- Each Object has specific attributes captured using new UI screens
- Additional Semantic checks for BPEL Transformation



abstract



manual task



automated task



notification



business event



sup process



business rule



ui



human task



xslt transformation

Key Product Features



Business Process Architect

- Easy to use, business analyst oriented process modeling tool
- Both web-based and windows based GUI
- Support for many methods, notations including process, data and systems
- Highly customizable to individual company requirements
- Comprehensive and extensible meta model
- Interoperability with other tools
- Extensive Reporting and publishing capability



Business Process Simulator

- Process Simulation
- Many parameters such as cost, time, resources
- What if analysis
- Ability to integrate with external systems
- Multiple analyses: Bottleneck identification, resource constraints



Business Process Publisher

- Pre-packaged Process Portal
- Corporate wide sharing of process knowledge
- Role based access
- Identical view to business process architect but optimized for online access
- Different language support
- Ability to provide feedback to models
- Ability to show information selectively

Business Process Repository

- Enables collaborative development of models
- Multi-user Usage
- Repository Management
- Server side deployment

BPA and SOA Suite integration



Bridge Business and IT

Communication can be easier



Business Professionals

Confronted with market challenges, trends, regulatory

Dynamic

Change processes in days



IT Professionals

Transforming business changes into systems

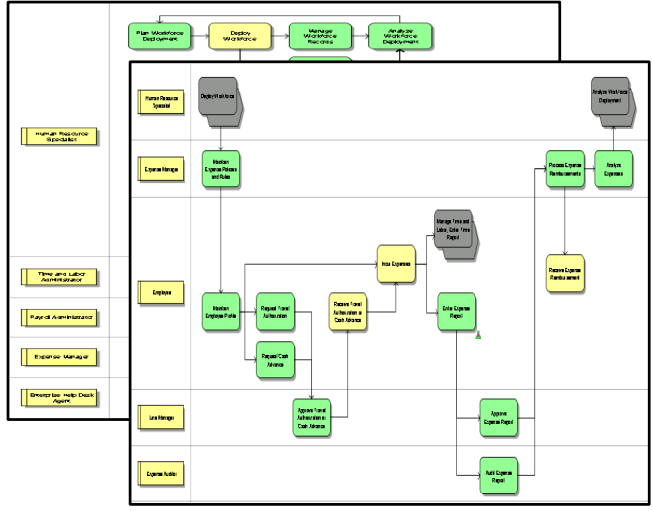
Relatively stable

Change systems in months

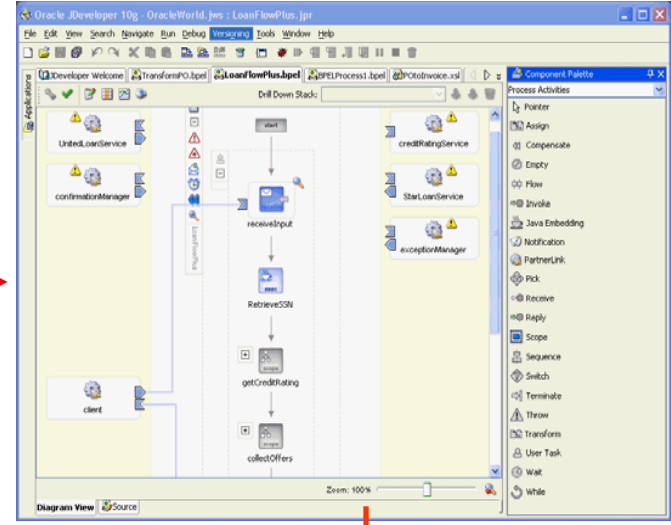
Modeling ↔ Implementation

Seamless collaboration while using best tools for respective purpose

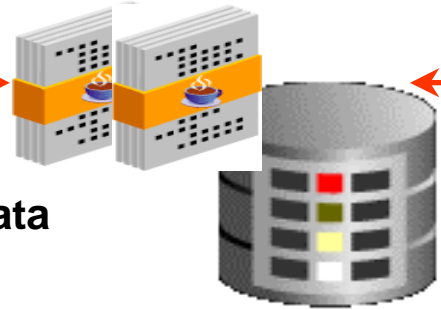
Business Analyst



Process Developer

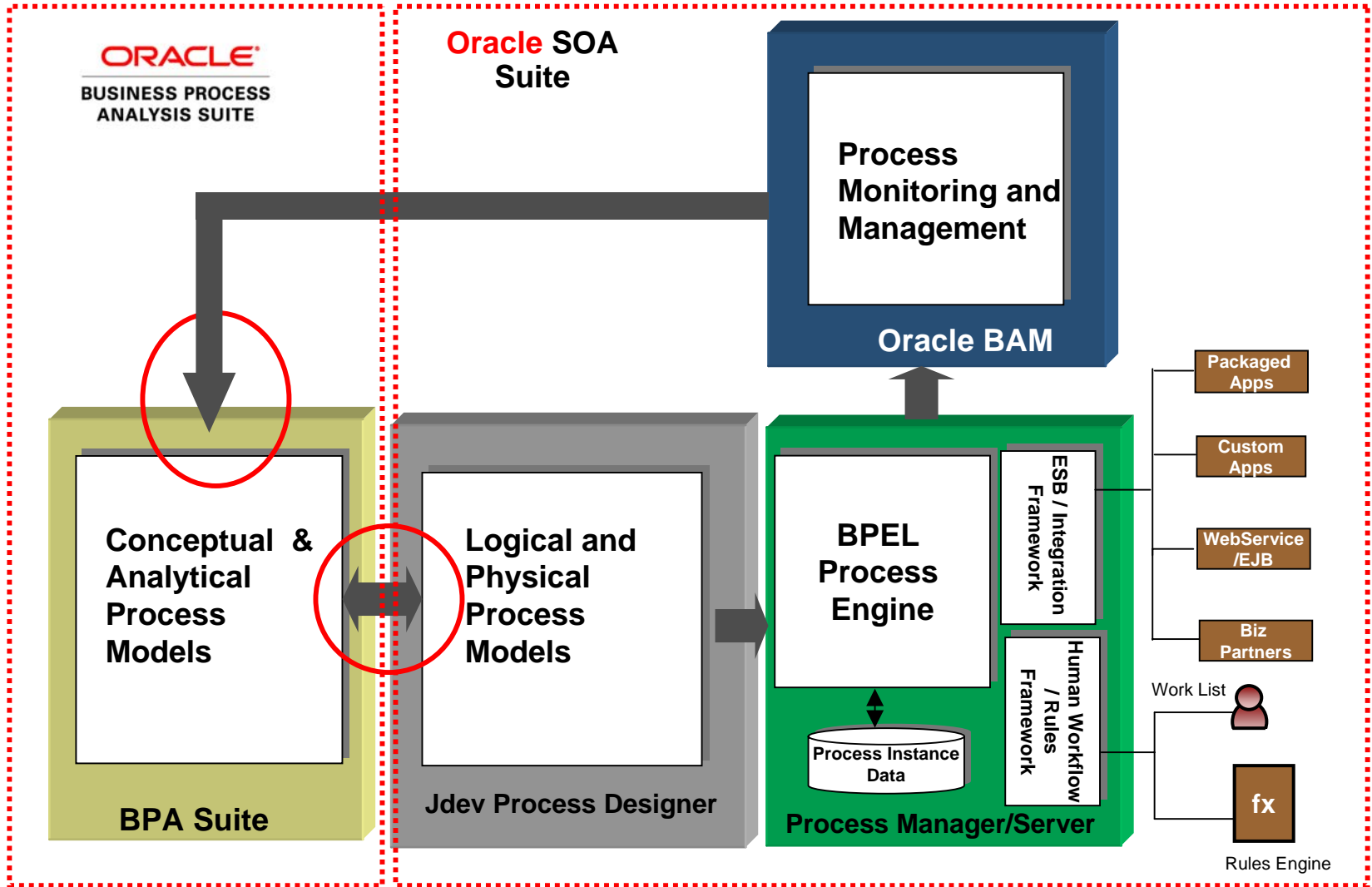


Shared Metadata Model



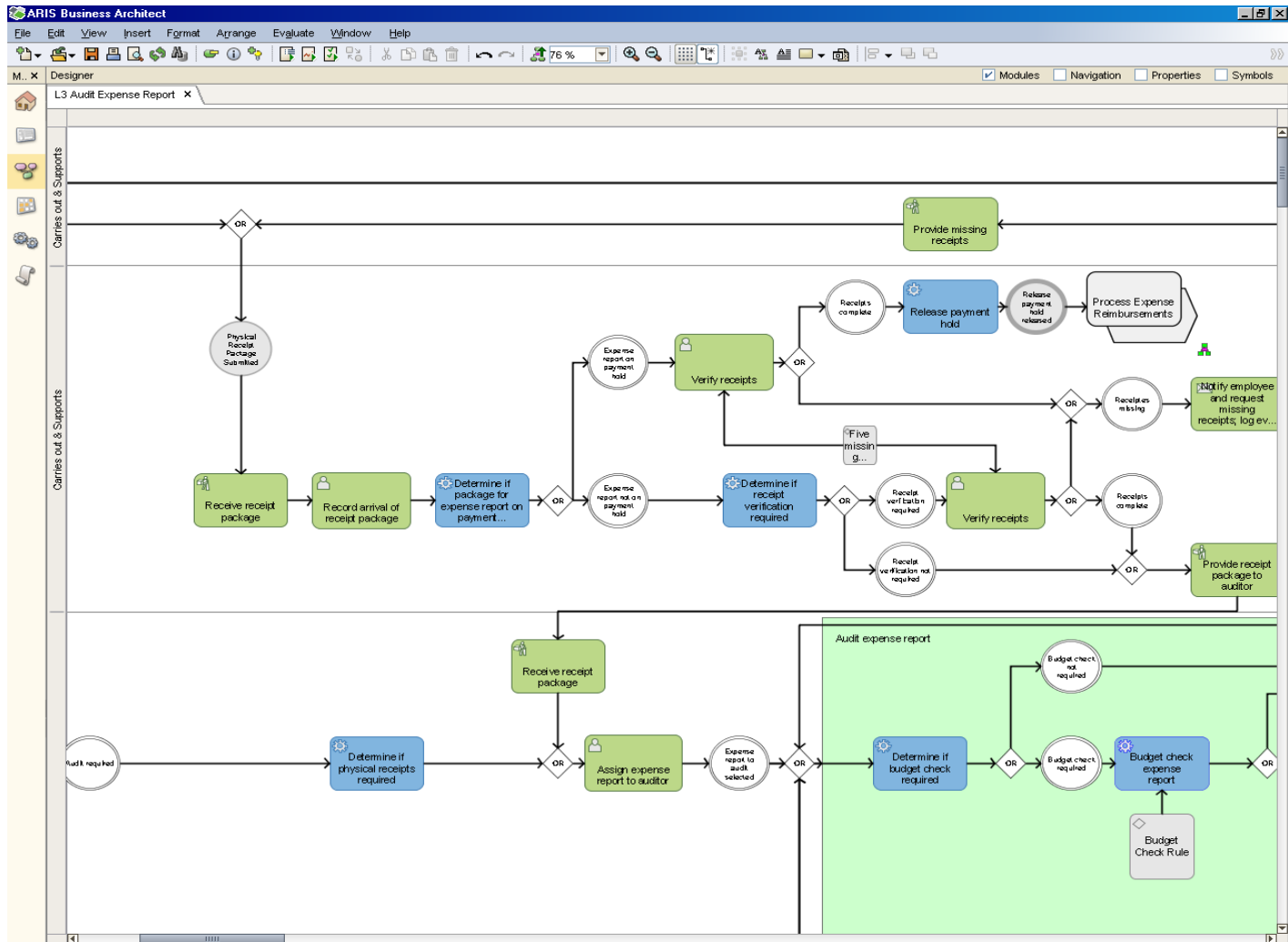
Business Process Repository

Integration Philosophy for Closed Loop BPM



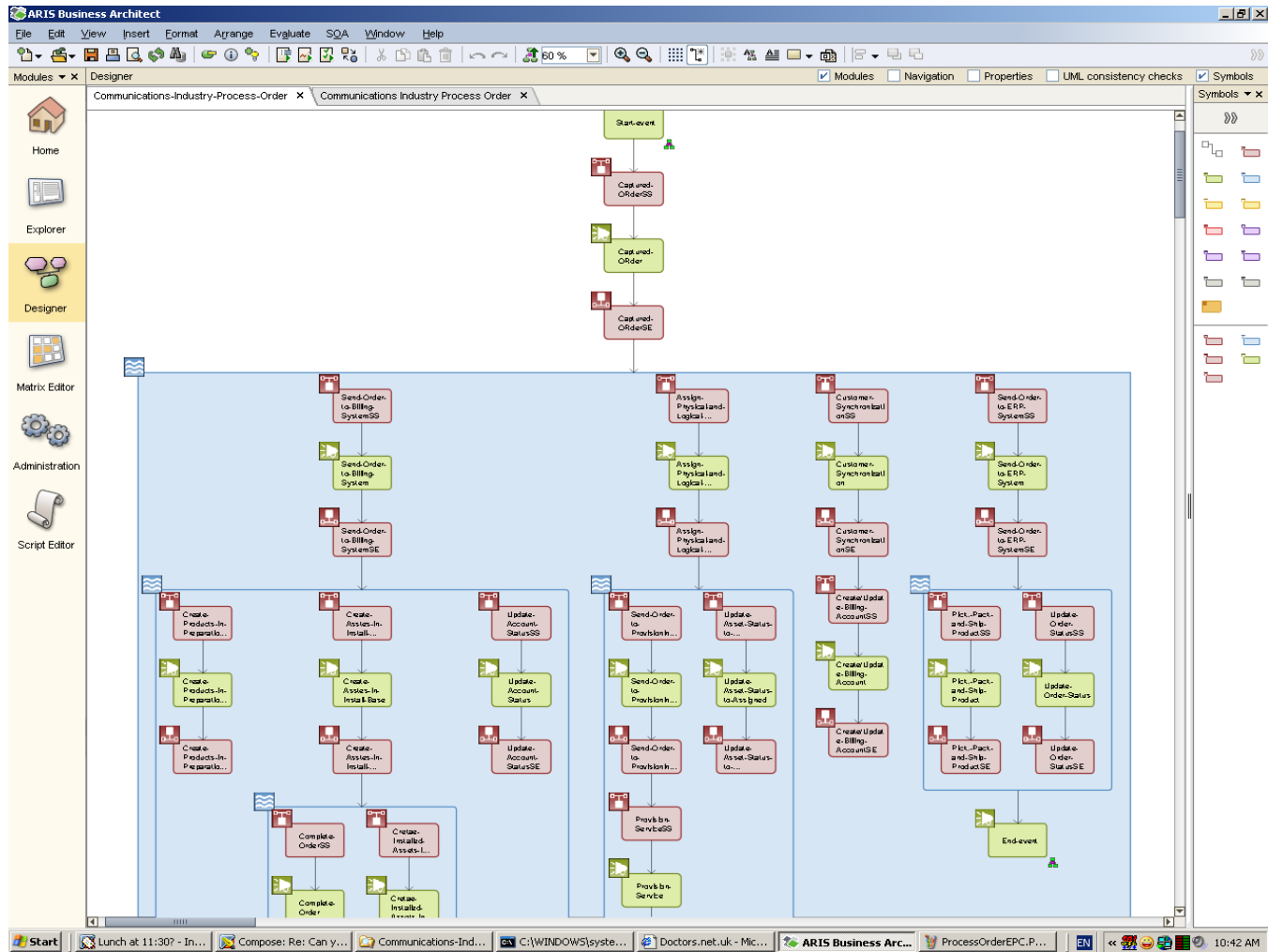
Process Models

Progressive refinement – Detailed business process



Process Models

Progressive refinement – Visualize process blueprint in BPA



Process Models

Progressive refinement – Process Blueprint in JDev

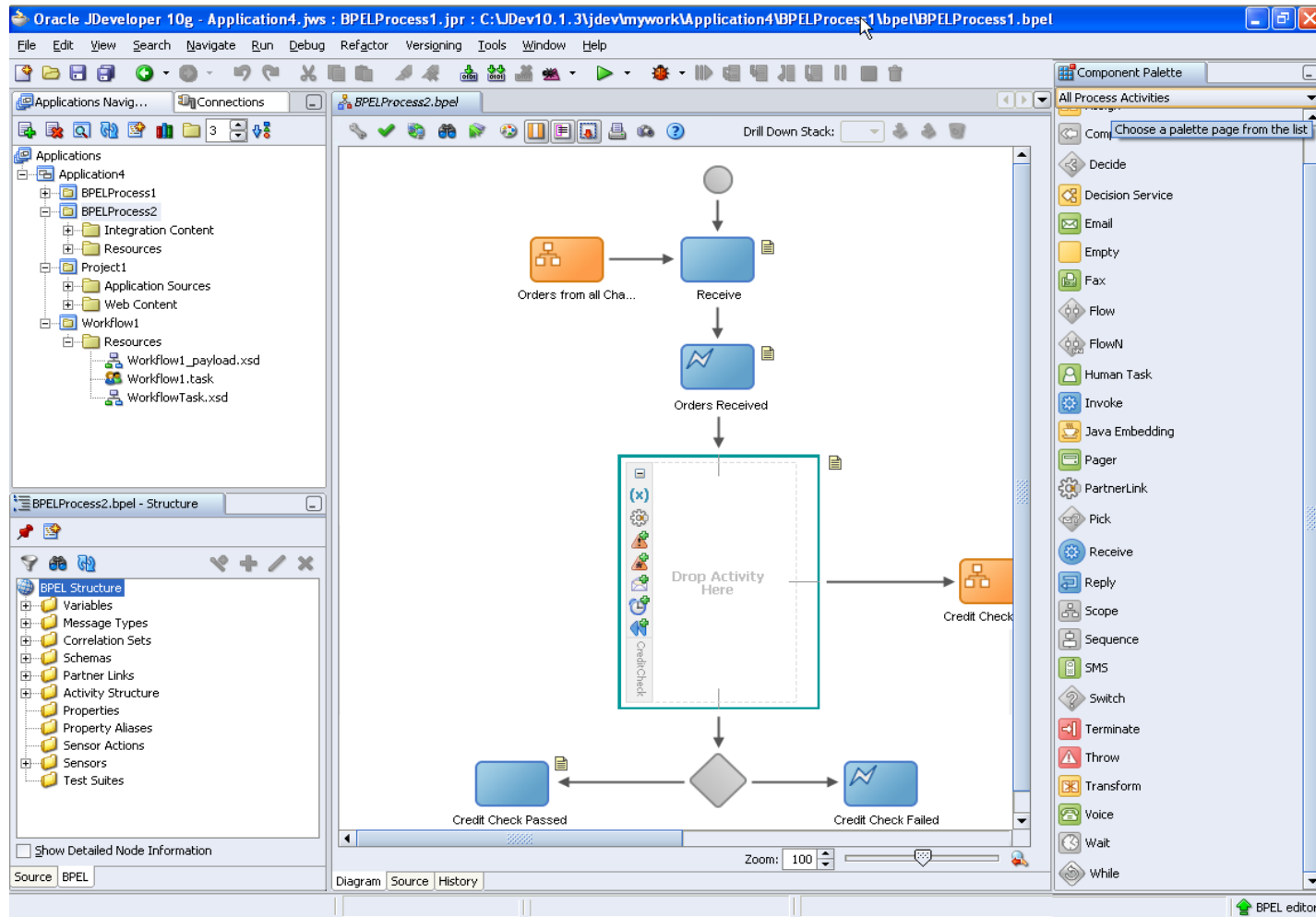
The screenshot displays the Oracle JDeveloper 10g interface for editing a BPEL process. The main workspace shows a 'Blue Print View' of a process flow. The flow starts with a 'StartEvent', followed by an 'Automatisierte-Aufgabe' (Automated Task), then a 'Human-Task', an 'XOR-rule', a 'Business-Rule', and finally an 'EndEvent'. A 'Property Inspector' window is open over the 'Human-Task' element, showing the following properties and values:

Property	Value
General	
PageFlow	
Attachment	Attachment
Role	
BusinessId	ff3acb13-47fe-11db-2...
Payload	Payload
RestrictedActions	
Title	TITLE
LastUpdateDate	10/9/06 12:10:46 PM
Owner	Owner
Reminder	Notify/Remind
Documentation	
Label	Human-Task
Priority	2
Outcomes	Approved,Rejected
<input checked="" type="checkbox"/> Fit ToWidth	

The interface also shows a 'Component Palette' on the right with 'Pointer' and 'Markup' tools, and a 'BPEL Overview' window showing a scaled diagram of the process. The bottom status bar indicates 'The document is not in a valid state. Please edit this file in the code editor to r...'

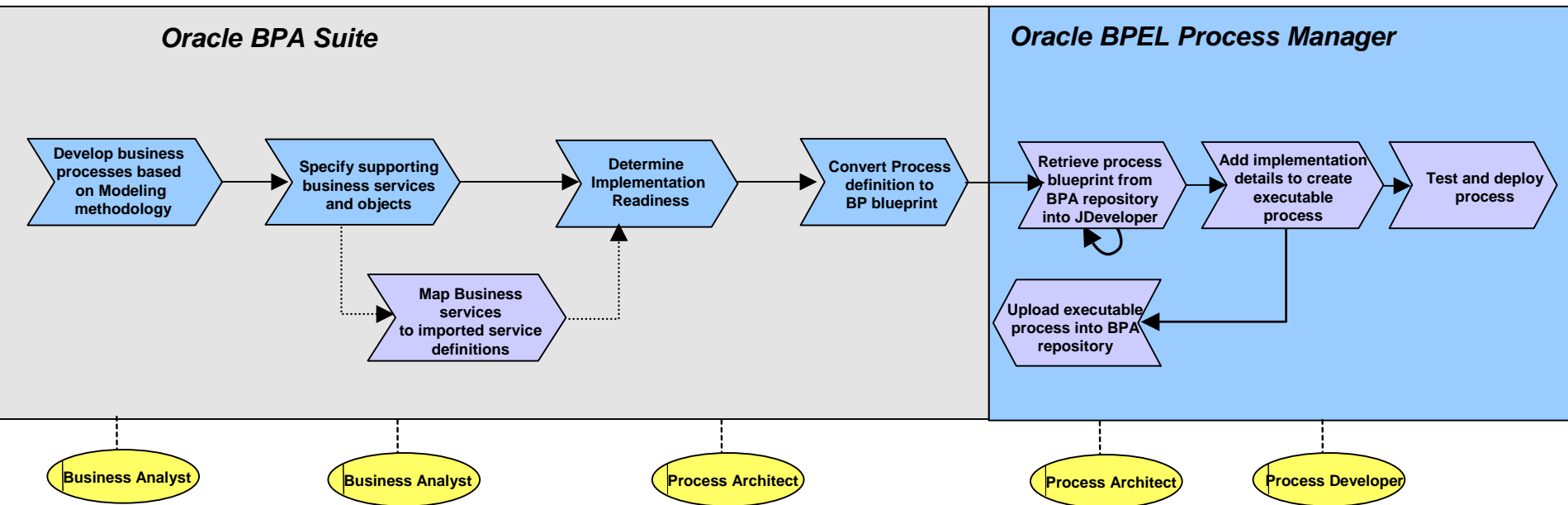
Process Models

Progressive refinement – Enriching the model in BPEL mode



Enriching the model in BPEL mode

Active Business Process Modeling Methodology (BPA Suite and SOA Suite)



Progressive Process refinement - from Business Process Definition To Process Execution

SOA Governance



What Gartner is saying about Governance

“Gartner estimates that a lack of working governance mechanisms in mid-to-large-size (greater than 50 services) SOA projects is the most common reason for project failure.”

Gartner, “Service-Oriented Architecture Craves Governance”, January 2006

Delivering
business
risk
accountability
strategies

Organizing
and
organizing
and

No
IT
do
de
inc
the
systems
code

Gov
An em
matri
By Phil
January
SOA (ser
better ser
with your
Counterin
tell you th

June 2005 ::

Uncon
by Da
June
Imple
the p
that
Here
The
excel
invol
facilit
softw
The

Establish chains of responsibility

*au
en
An
po
en
th*

*Governance is about getting
people to do the right thing at
the right time in the right way*

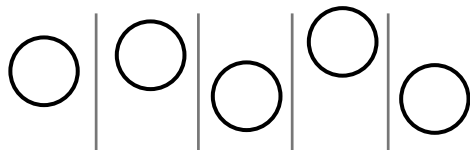
Marks of Good IT Governance With SOA

- Differentiated Business Strategies Enabled by SOA
- Business Objectives for Evaluating SOA Investments
- Executives Engaged and Can Describe Arrangements
- Stable with Few Changes Year to Year
- Well-Defined Formal IT Exception Processes
- Multiple Formal Communications Methods to Engage Business Leaders

Where Do You Stand?

? SOA by Accident

IT Plan Non Existent or Not Aligned with Business Plan
 IT Reactive to Business Initiatives
 No SOA Strategy
 No SOA Roadmap
 Silos of SOA

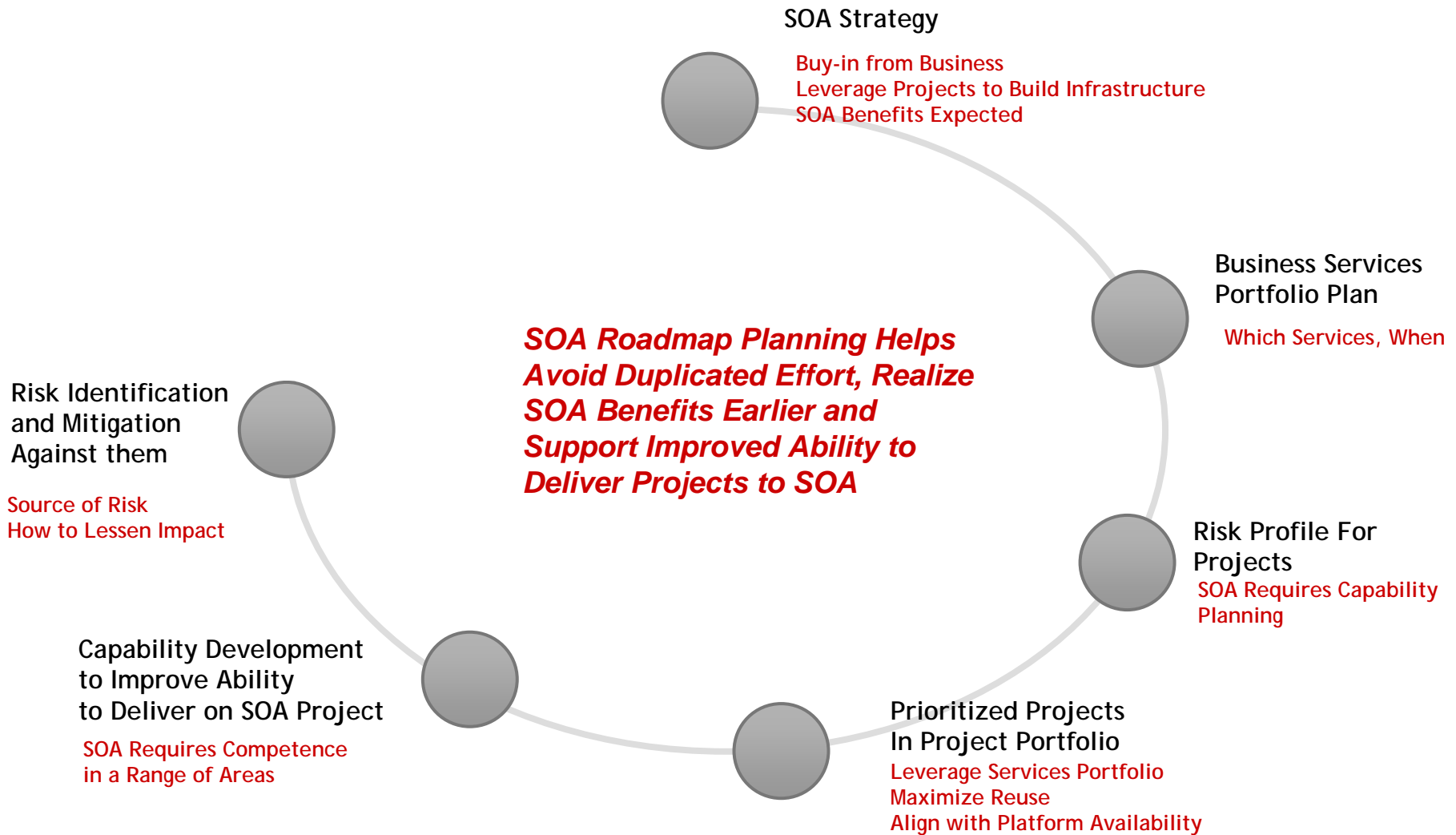


➔ SOA By Design

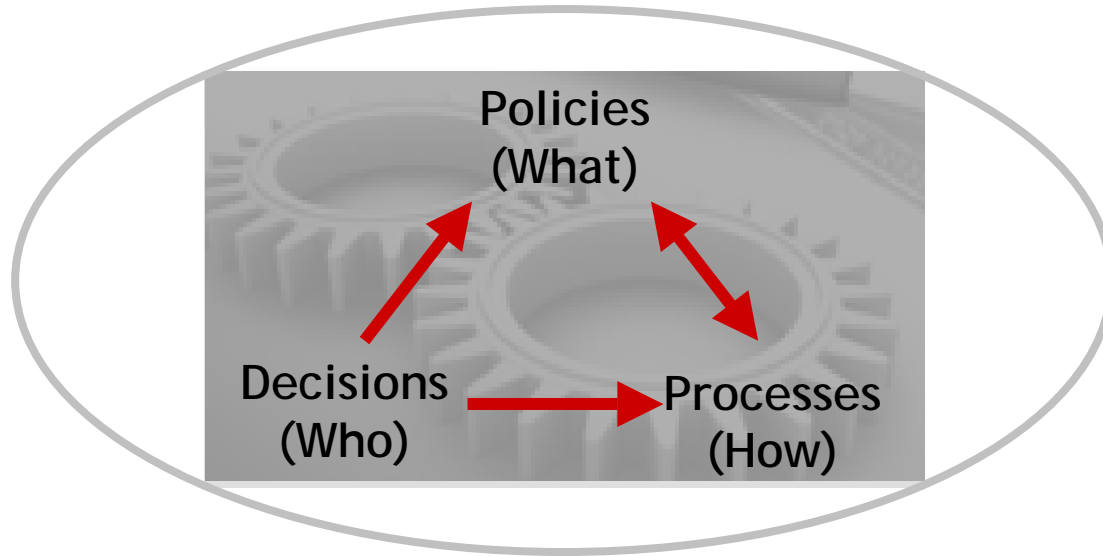
IT Plans Aligned with Business Plans and Initiatives
 SOA Strategy that is Communicated Widely
 Well-Defined Business Benefits Sought from SOA Strategy
 SOA Roadmap Aligned to Deliver on Business and SOA Strategy



Constituents of a SOA Roadmap



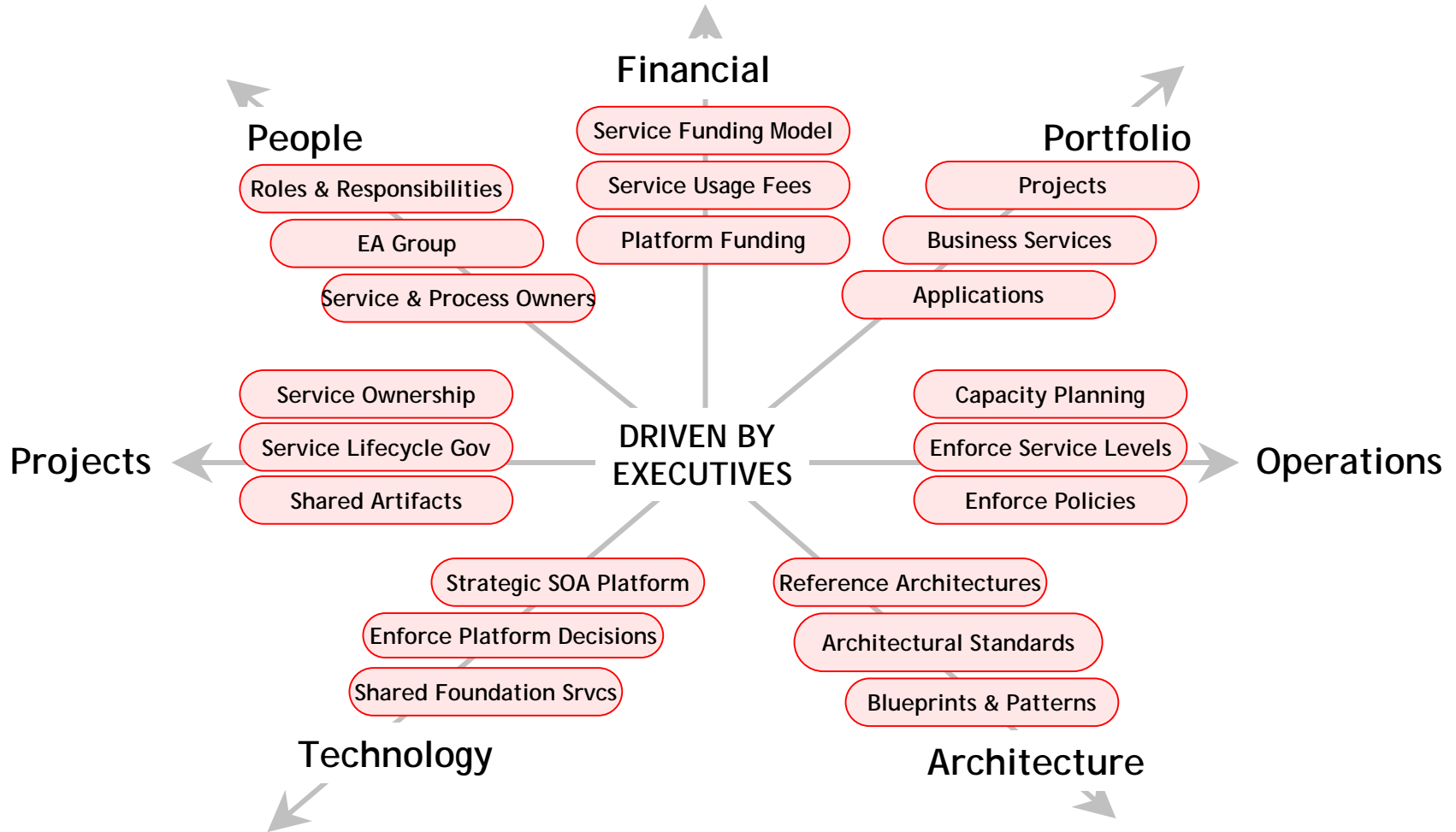
Essence of Governance



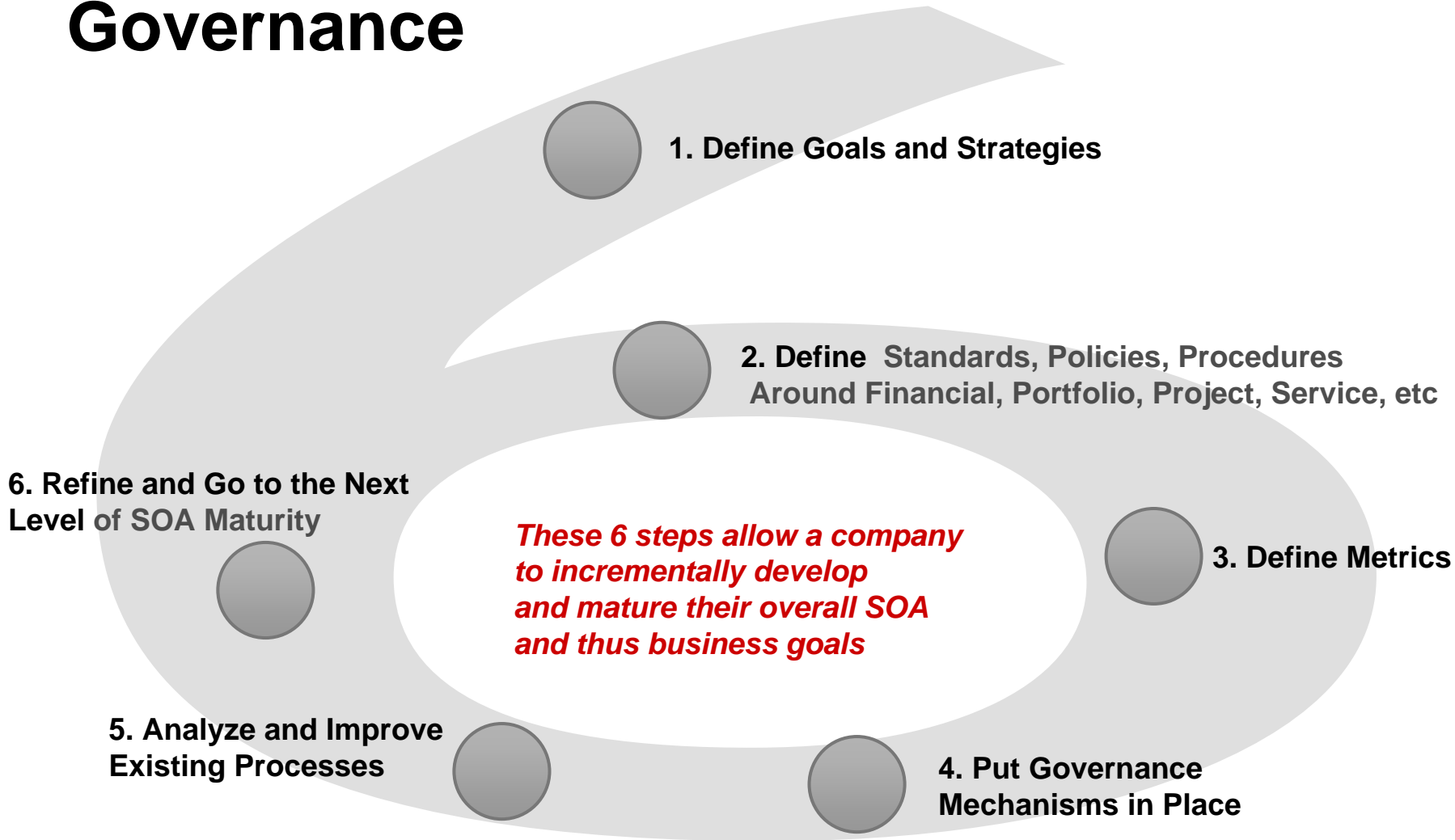
GOVERNANCE with SOA ADDRESSES

- **What** decisions must be made for effective management
- **Who** should make those decisions and who has input rights?
- **How** will the decisions be formed and enacted

Key Leverage Points for SOA Governance



6 Steps to Successful SOA Governance



Summary

- Increasing SOA Maturity Only Achievable through SOA Governance
- SOA Governance Requires More than Technology
- Build on Existing IT Governance Mechanisms
- Executive Buy-In to Catalyze Change
- Complexity of SOA Governance Proportional to Company Size
- Oracle has a Comprehensive Solution for SOA Governance



Q

&

A



ORACLE IS THE INFORMATION COMPANY

ORACLE®